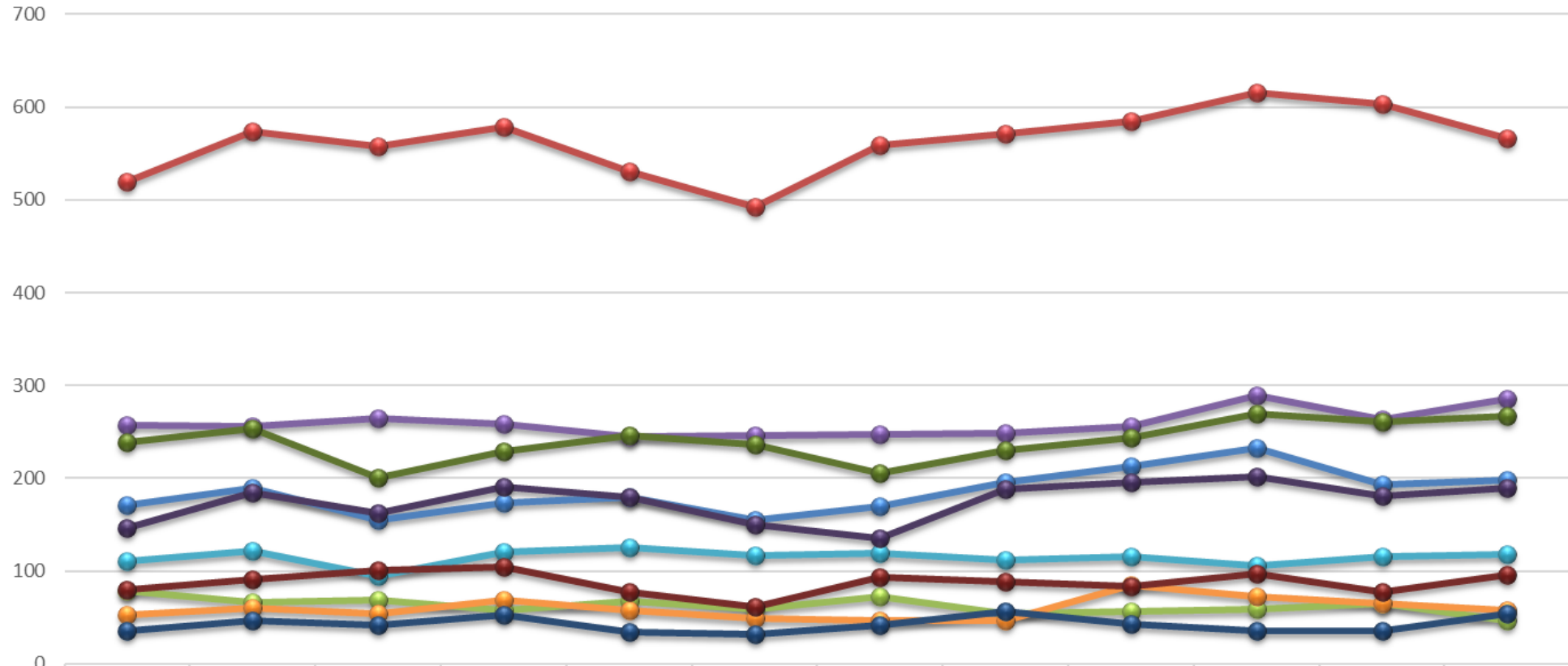
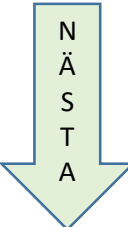


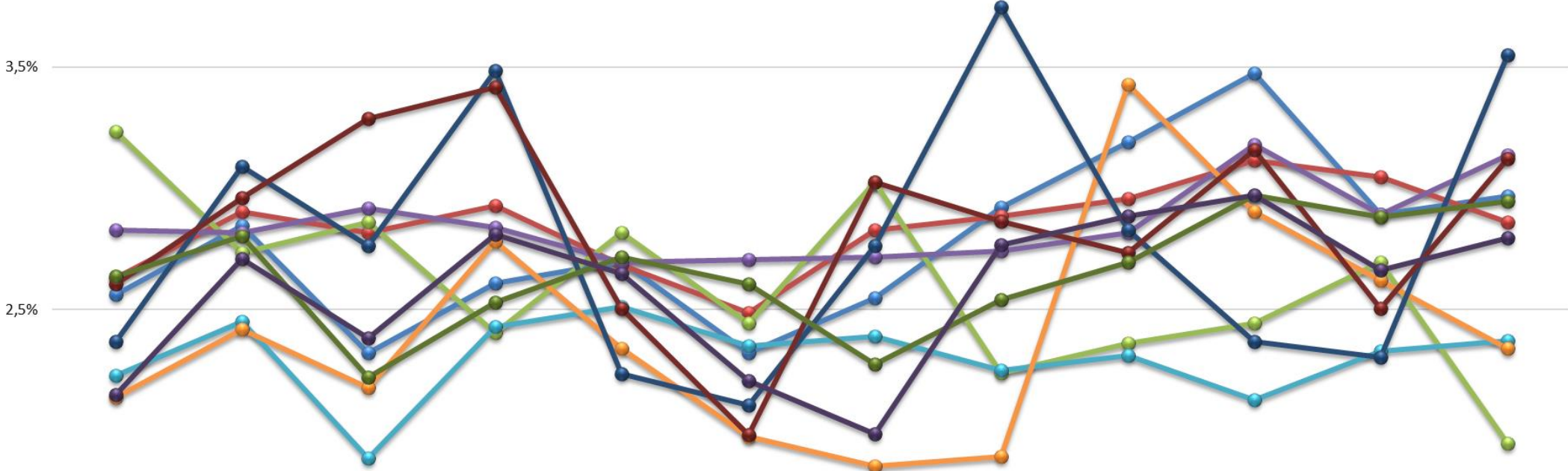
Antal inskrivna = vårdkontakter 65+ per kommun



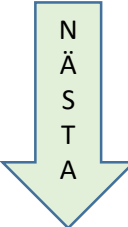
	2023-02	2023-03	2023-04	2023-05	2023-06	2023-07	2023-08	2023-09	2023-10	2023-11	2023-12	2024-01
● Bollnäs	171	190	155	174	180	155	170	195	213	232	193	198
● Gävle	520	574	557	579	531	492	559	571	585	616	603	566
● Hofors	78	66	69	58	68	59	73	54	57	59	65	47
● Hudiksvall	257	256	265	258	245	246	247	249	256	289	263	285
● Ljusdal	111	122	94	121	125	117	119	112	115	106	116	118
● Nordanstig	53	60	54	69	58	49	46	47	85	72	65	58
● Ockelbo	36	47	42	53	34	32	42	57	43	36	35	54
● Ovanåker	80	91	101	105	77	61	93	88	84	97	77	96
● Sandviken	239	254	201	229	246	236	206	230	244	269	261	267
● Söderhamn	146	184	162	191	180	150	135	188	196	202	181	190



Andel inskrivna = vårdkontakter 65+ per kommun



	2023-02	2023-03	2023-04	2023-05	2023-06	2023-07	2023-08	2023-09	2023-10	2023-11	2023-12	2024-01
Bollnäs	3%	3%	2%	3%	3%	2%	3%	3%	3%	3%	3%	3%
Gävle	3%	3%	3%	3%	3%	2%	3%	3%	3%	3%	3%	3%
Hofors	3%	3%	3%	2%	3%	2%	3%	2%	2%	2%	3%	2%
Hudiksvall	3%	3%	3%	3%	3%	3%	3%	3%	3%	3%	3%	3%
Ljusdal	2%	2%	2%	2%	3%	2%	2%	2%	2%	2%	2%	2%
Nordanstig	2%	2%	2%	3%	2%	2%	2%	2%	3%	3%	3%	2%
Ockelbo	2%	3%	3%	3%	2%	2%	3%	4%	3%	2%	2%	4%
Ovanåker	3%	3%	3%	3%	3%	2%	3%	3%	3%	3%	3%	3%
Sandviken	3%	3%	2%	3%	3%	3%	2%	3%	3%	3%	3%	3%
Söderhamn	2%	3%	2%	3%	3%	2%	2%	3%	3%	3%	3%	3%



Andelen inskrivna som är över 65 år per kommun 2023 totalt

