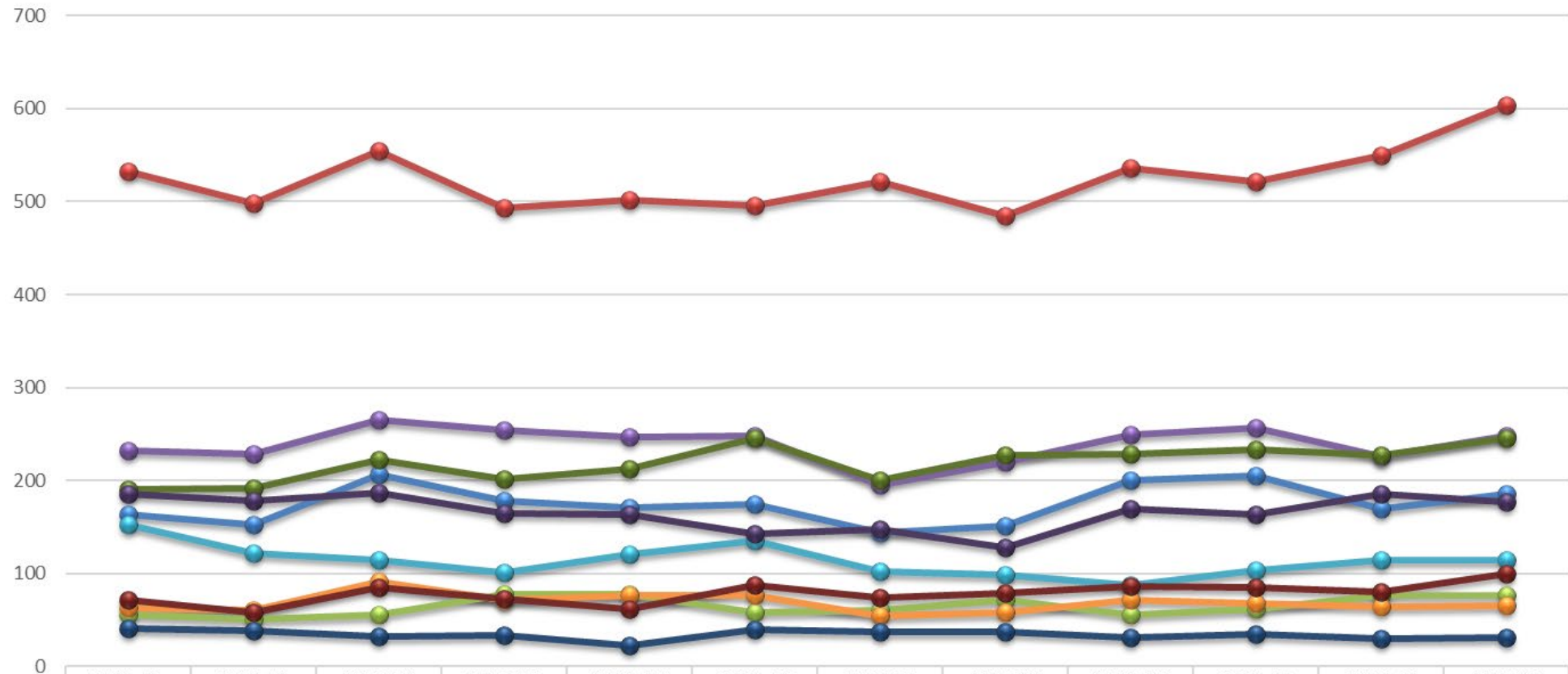


Antal inskrivna = vårdkontakter 65+ per kommun



	2021-01	2021-02	2021-03	2021-04	2021-05	2021-06	2021-07	2021-08	2021-09	2021-10	2021-11	2021-12
Bollnäs	163	152	206	178	171	174	144	151	200	205	170	186
Gävle	532	498	555	493	502	496	522	485	536	522	550	603
Hofors	56	51	55	78	78	58	61	72	55	62	76	77
Hudiksvall	232	228	265	254	247	248	195	220	249	257	226	248
Ljusdal	152	122	115	101	121	135	102	99	88	104	114	115
Nordanstig	63	60	91	71	76	76	54	58	71	68	64	66
Ockelbo	41	38	32	34	23	40	37	37	31	35	30	31
Ovanåker	72	58	85	73	62	87	74	79	86	85	80	100
Sandviken	191	192	222	201	212	246	200	227	228	233	227	246
Söderhamn	185	178	187	165	163	143	147	128	170	164	185	177

Andel inskrivna = vårdkontakter 65+ per kommun

3,5%

2,5%

1,5%

	2021-01	2021-02	2021-03	2021-04	2021-05	2021-06	2021-07	2021-08	2021-09	2021-10	2021-11	2021-12
● Bollnäs	2%	2%	3%	3%	3%	3%	2%	2%	3%	3%	3%	3%
● Gävle	3%	3%	3%	2%	3%	3%	3%	2%	3%	3%	3%	3%
● Hofors	2%	2%	2%	3%	3%	2%	3%	3%	2%	3%	3%	3%
● Hudiksvall	3%	3%	3%	3%	3%	3%	2%	2%	3%	3%	2%	3%
● Ljusdal	3%	2%	2%	2%	2%	3%	2%	2%	2%	2%	2%	2%
● Nordanstig	3%	2%	4%	3%	3%	3%	2%	2%	3%	3%	3%	3%
● Ockelbo	3%	2%	2%	2%	2%	3%	2%	2%	2%	2%	2%	2%
● Ovanåker	2%	2%	3%	2%	2%	3%	2%	3%	3%	3%	3%	3%
● Sandviken	2%	2%	2%	2%	2%	3%	2%	3%	3%	3%	3%	3%
● Söderhamn	3%	3%	3%	2%	2%	2%	2%	2%	3%	2%	3%	3%

Andelen inskrivna som är över 65 år per kommun 2021

