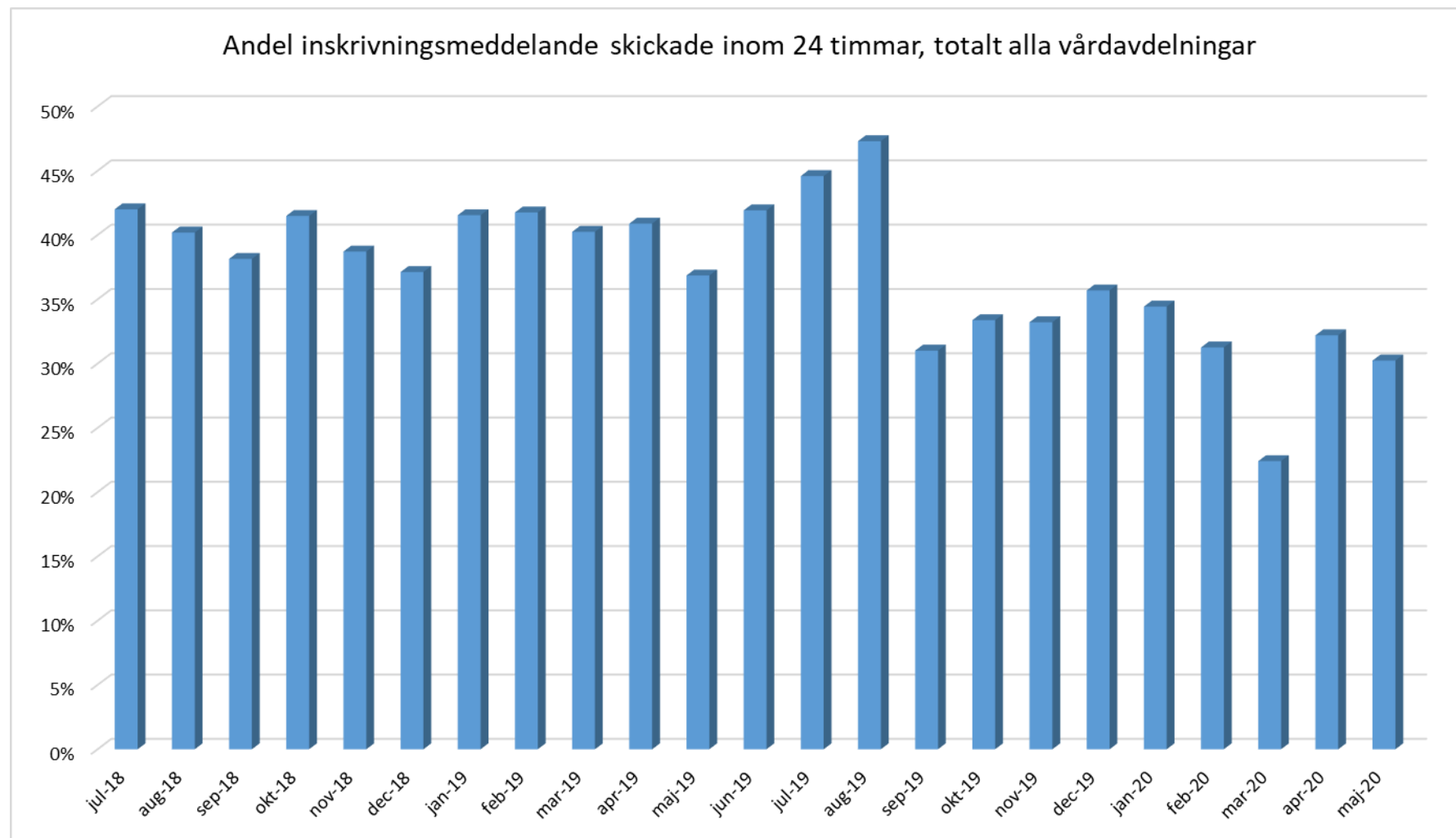
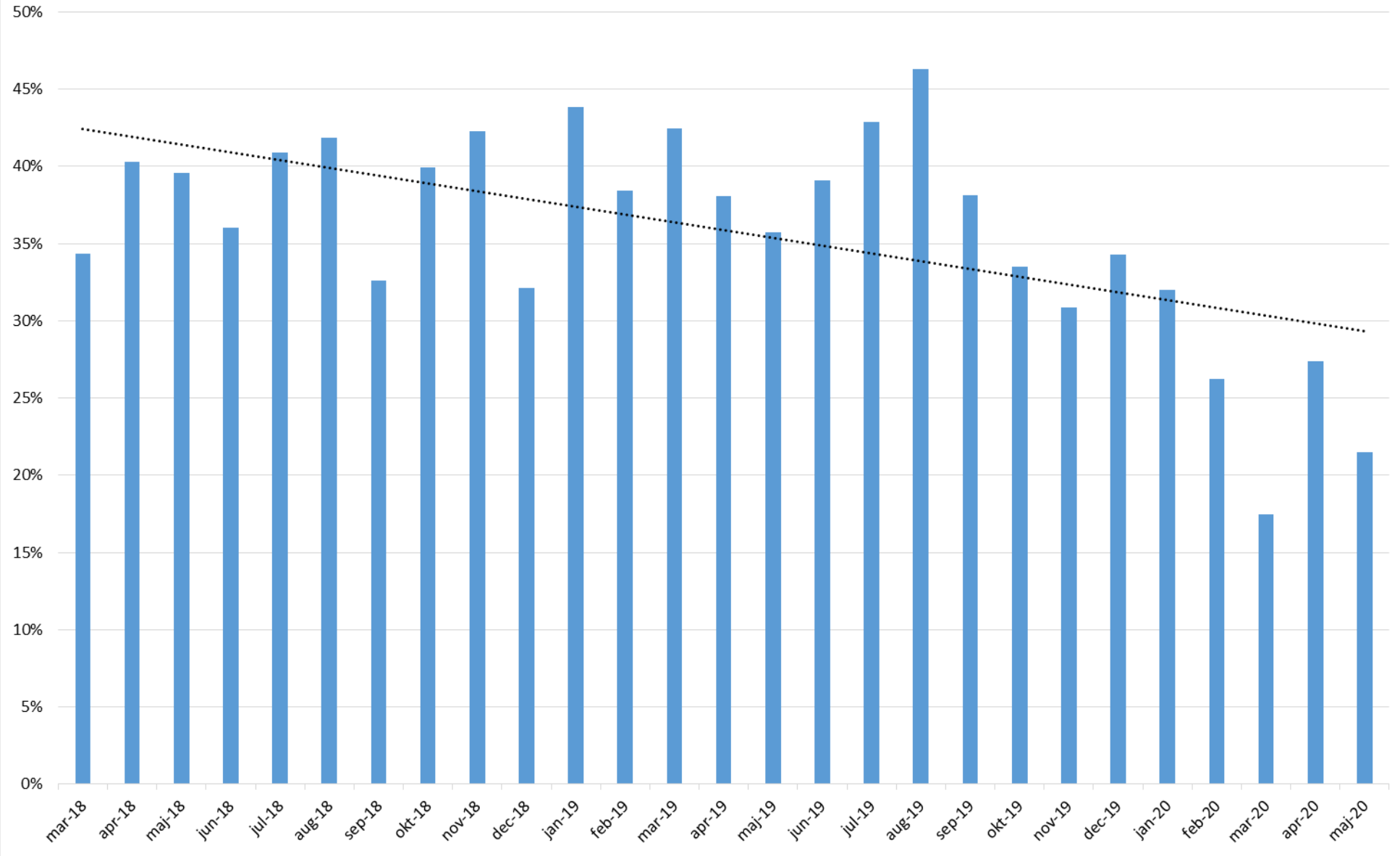


Andelen inskrivningsmeddelanden som skickats inom 24 timmar

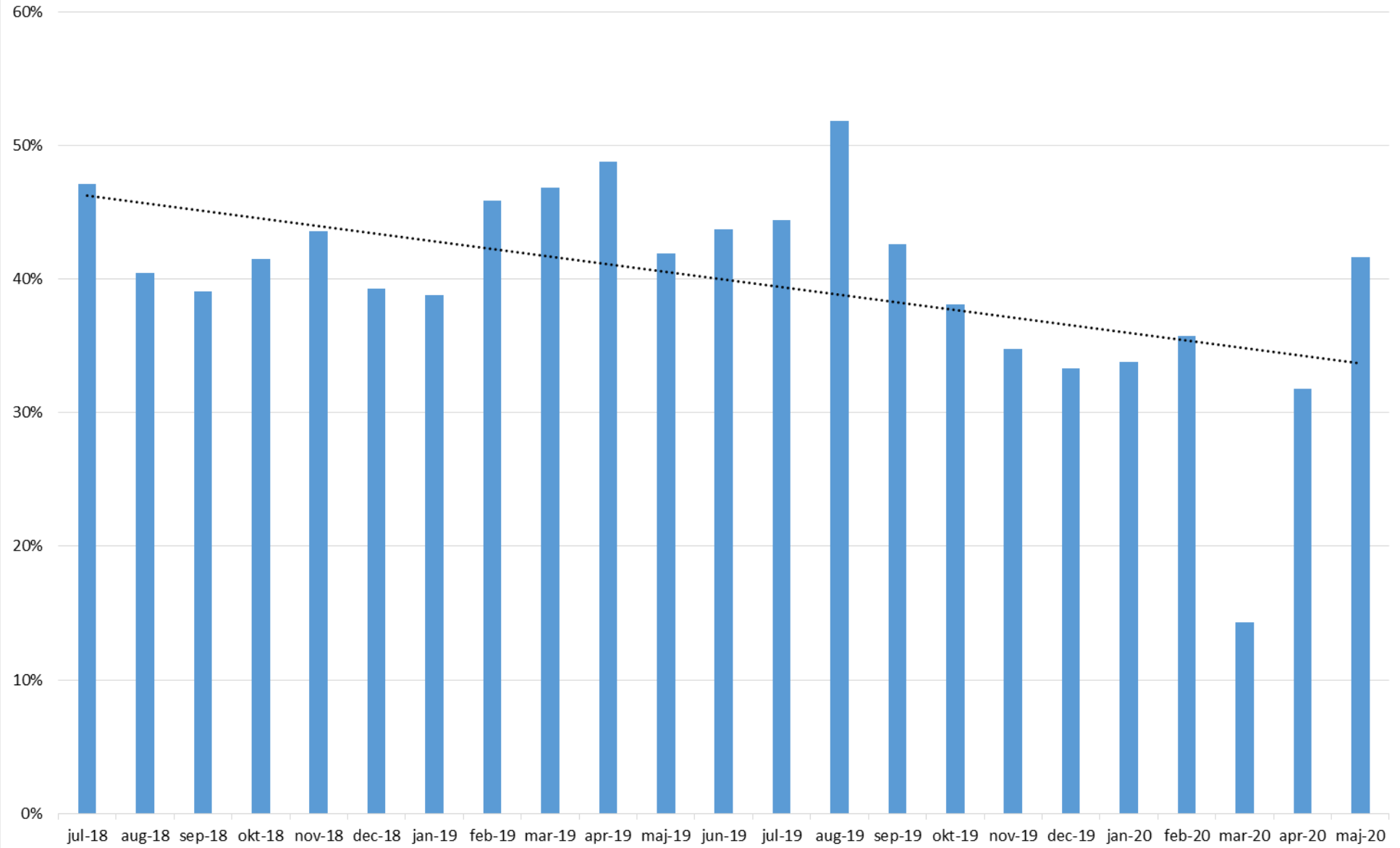
	Inom 24 h	Totalt inskrivna	Andel inom
mar-18	345	880	39%
apr-18	412	1004	41%
maj-18	429	1015	42%
jun-18	359	915	39%
jul-18	373	888	42%
aug-18	373	928	40%
sep-18	333	873	38%
okt-18	397	957	41%
nov-18	355	917	39%
dec-18	323	870	37%
jan-19	430	1035	42%
feb-19	433	1037	42%
mar-19	419	1041	40%
apr-19	431	1054	41%
maj-19	384	1042	37%
jun-19	420	1002	42%
jul-19	441	989	45%
aug-19	333	704	47%
sep-19	258	832	31%
okt-19	260	779	33%
nov-19	289	870	33%
dec-19	303	849	36%
jan-20	323	938	34%
feb-20	256	819	31%
mar-20	78	348	22%
apr-20	199	618	32%
maj-20	192	635	30%



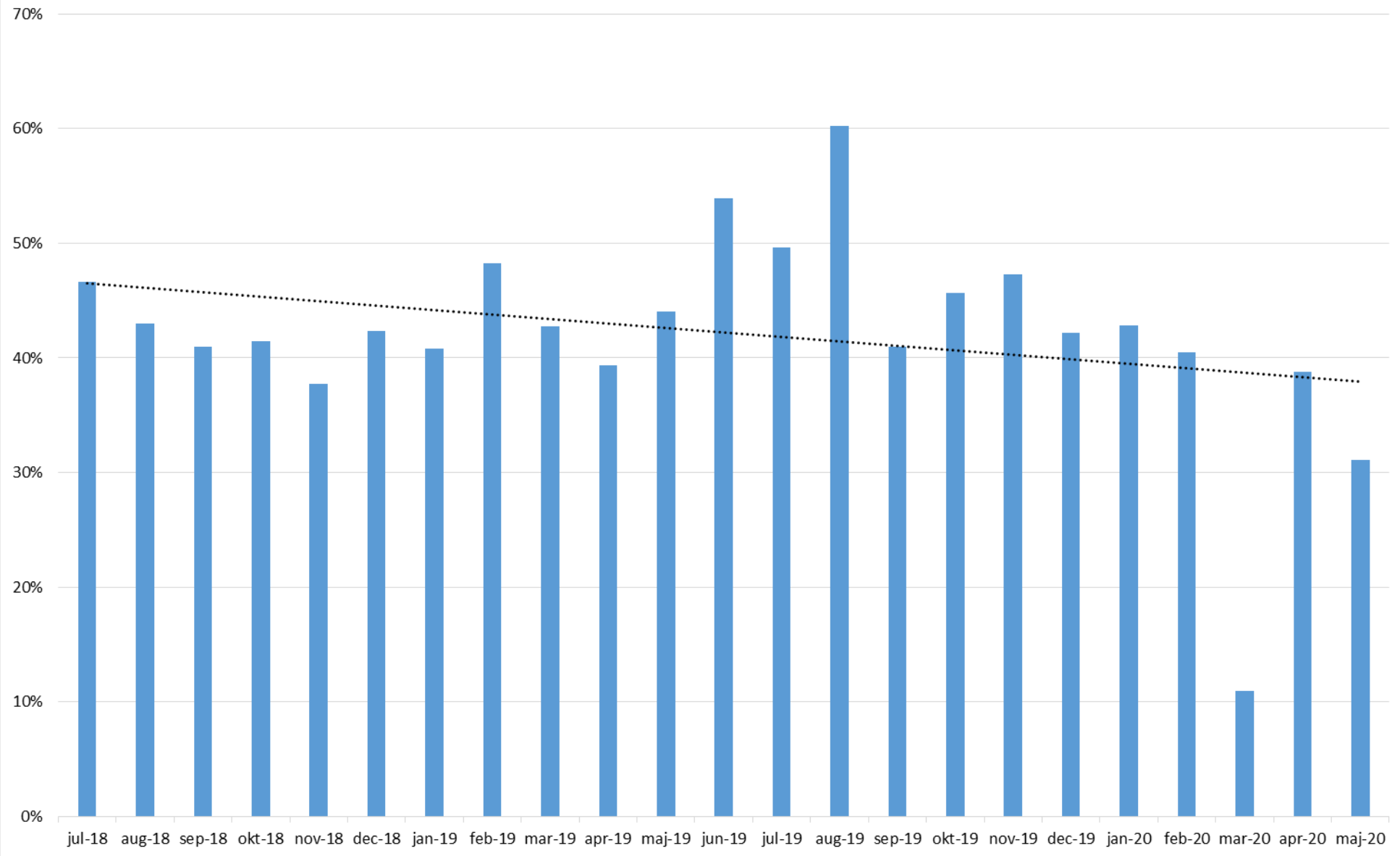
Internmedicin



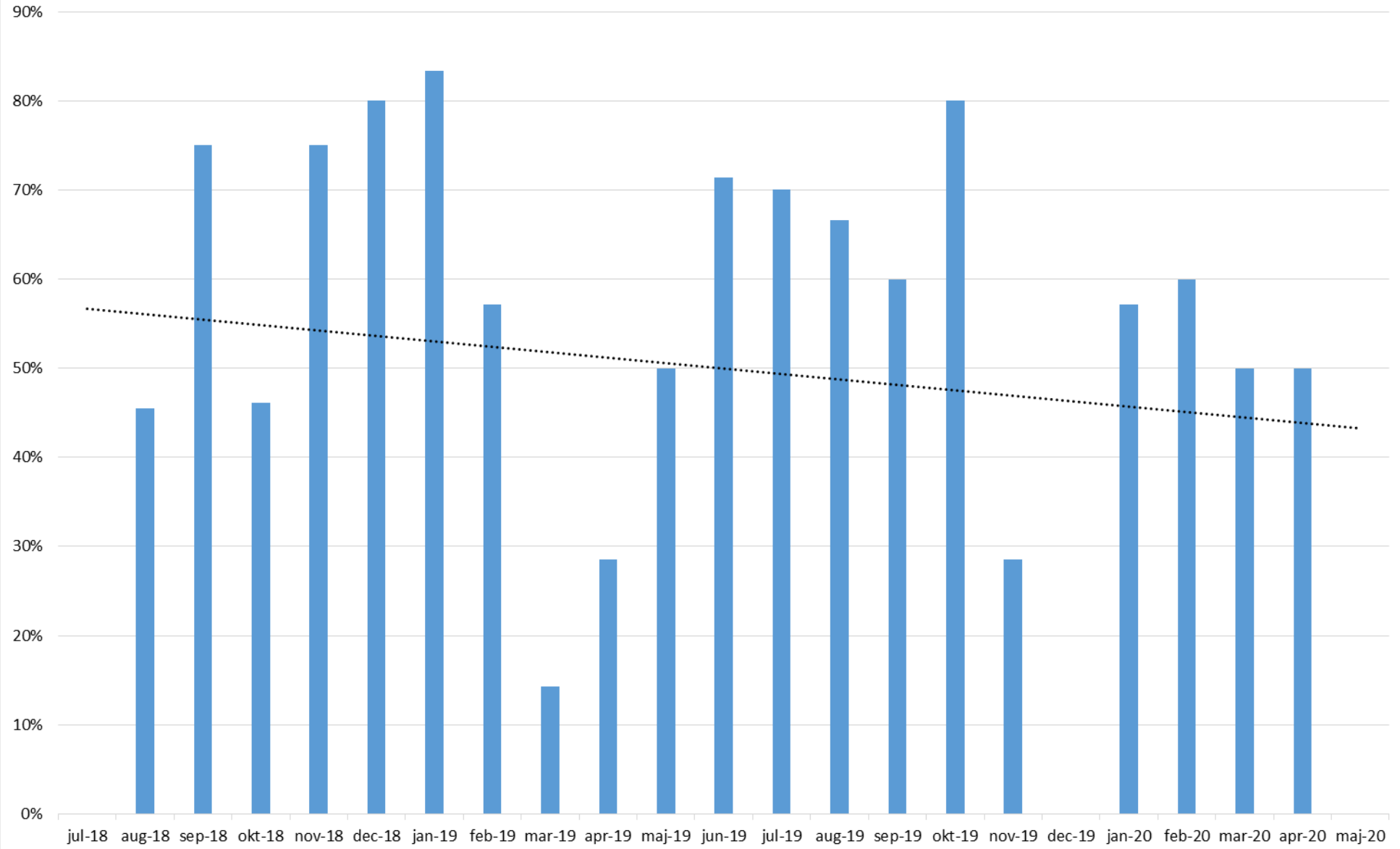
Kardiologi



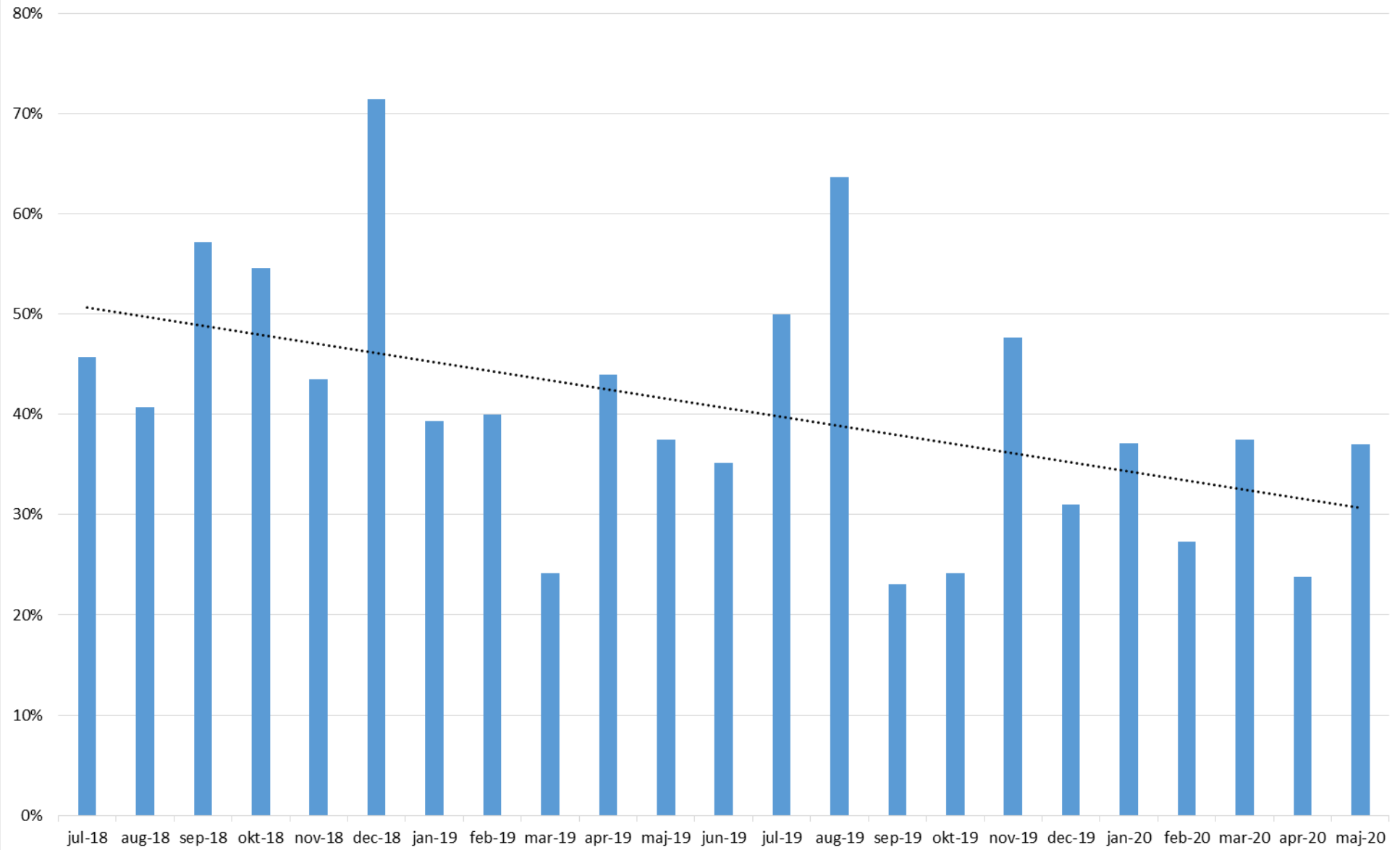
Kirurgi



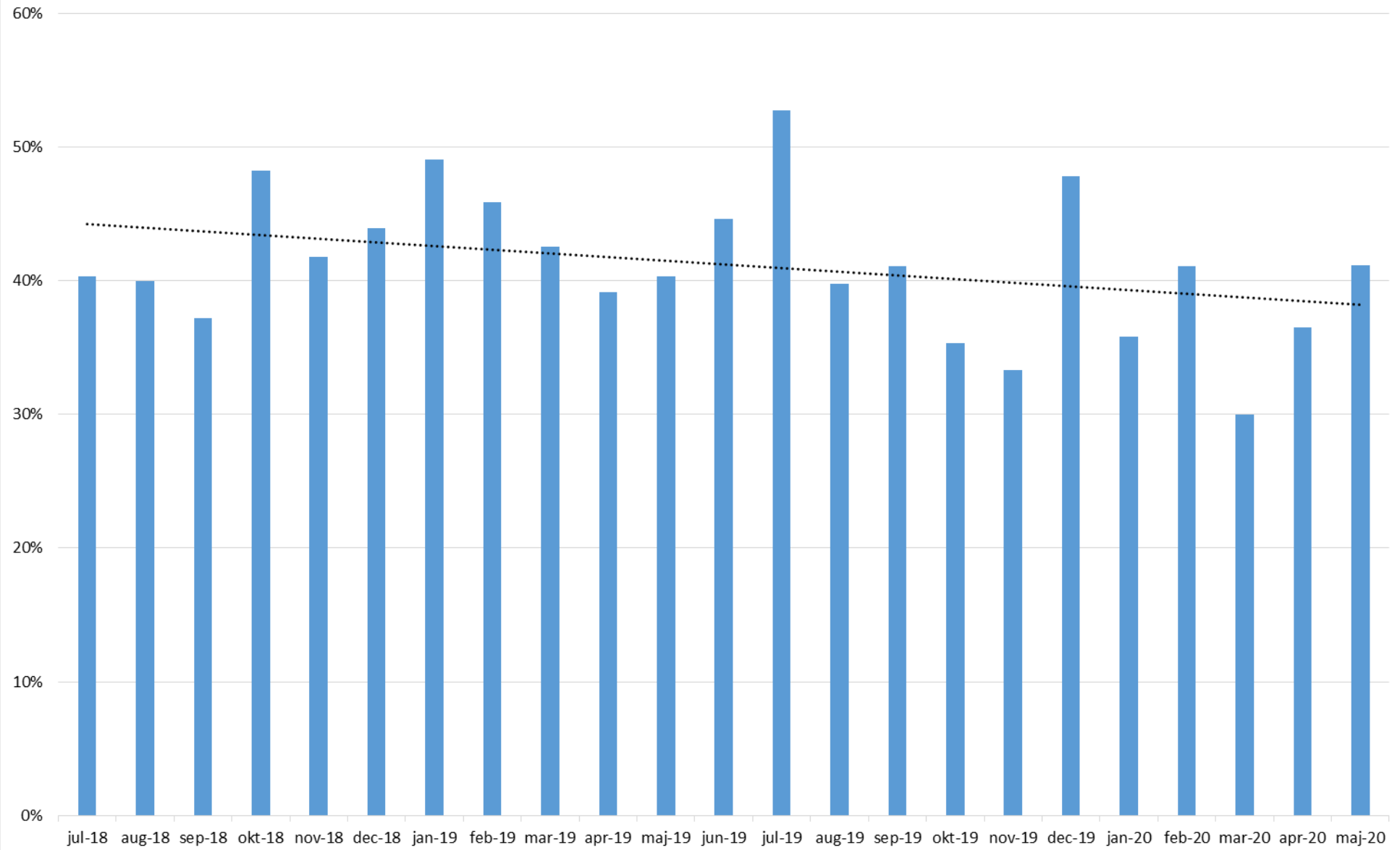
Kvinno



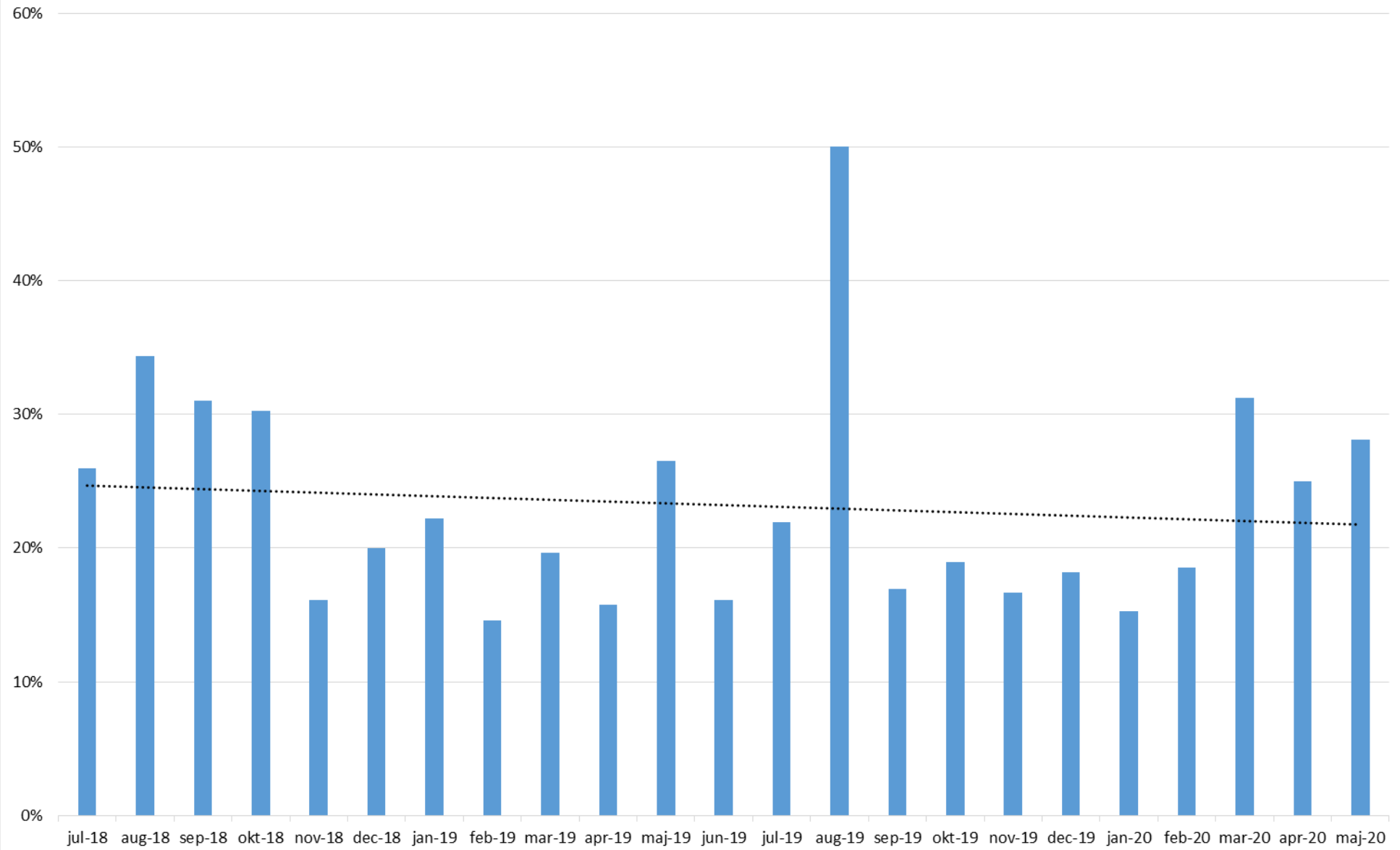
Onkologi



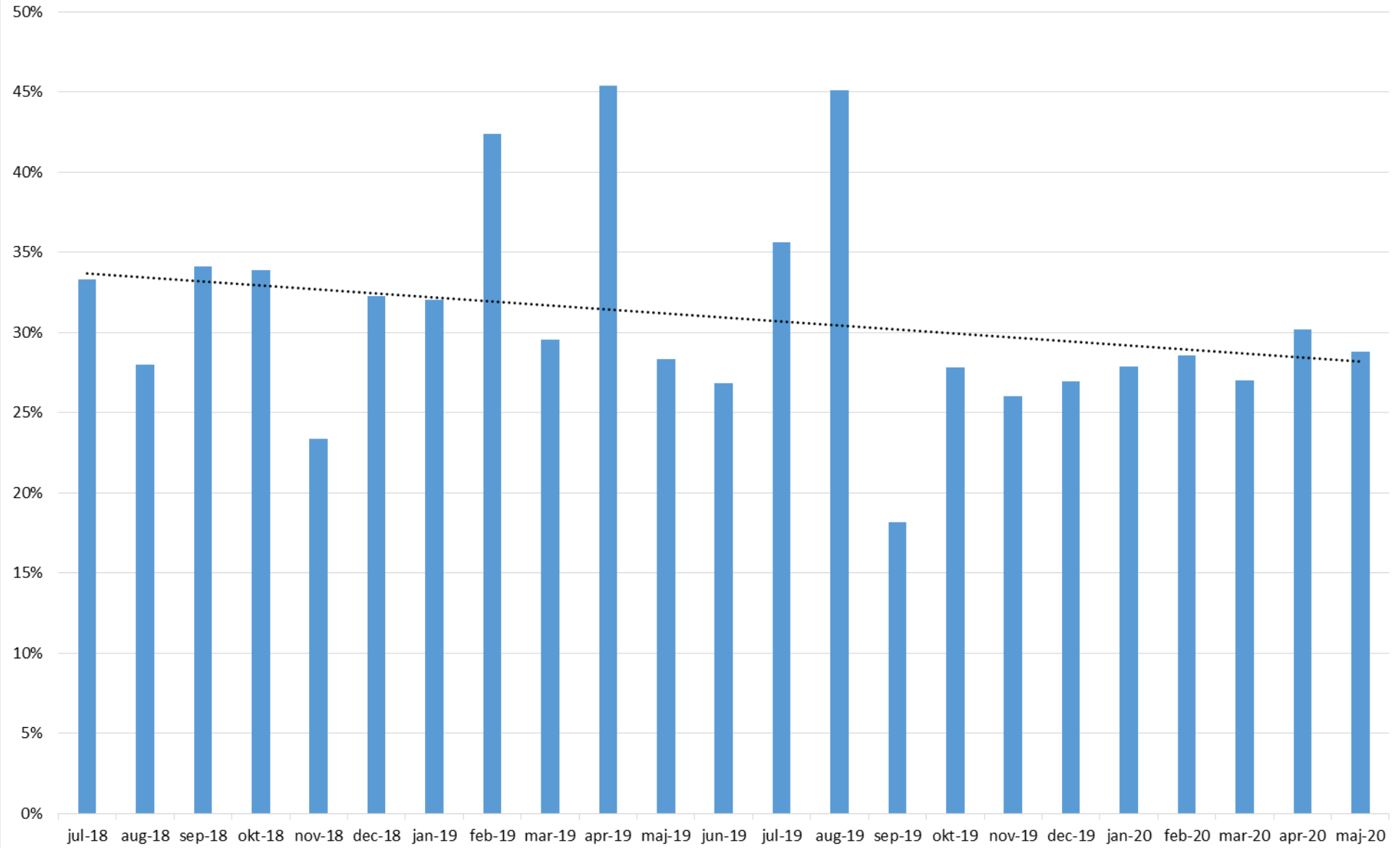
Ortopedi



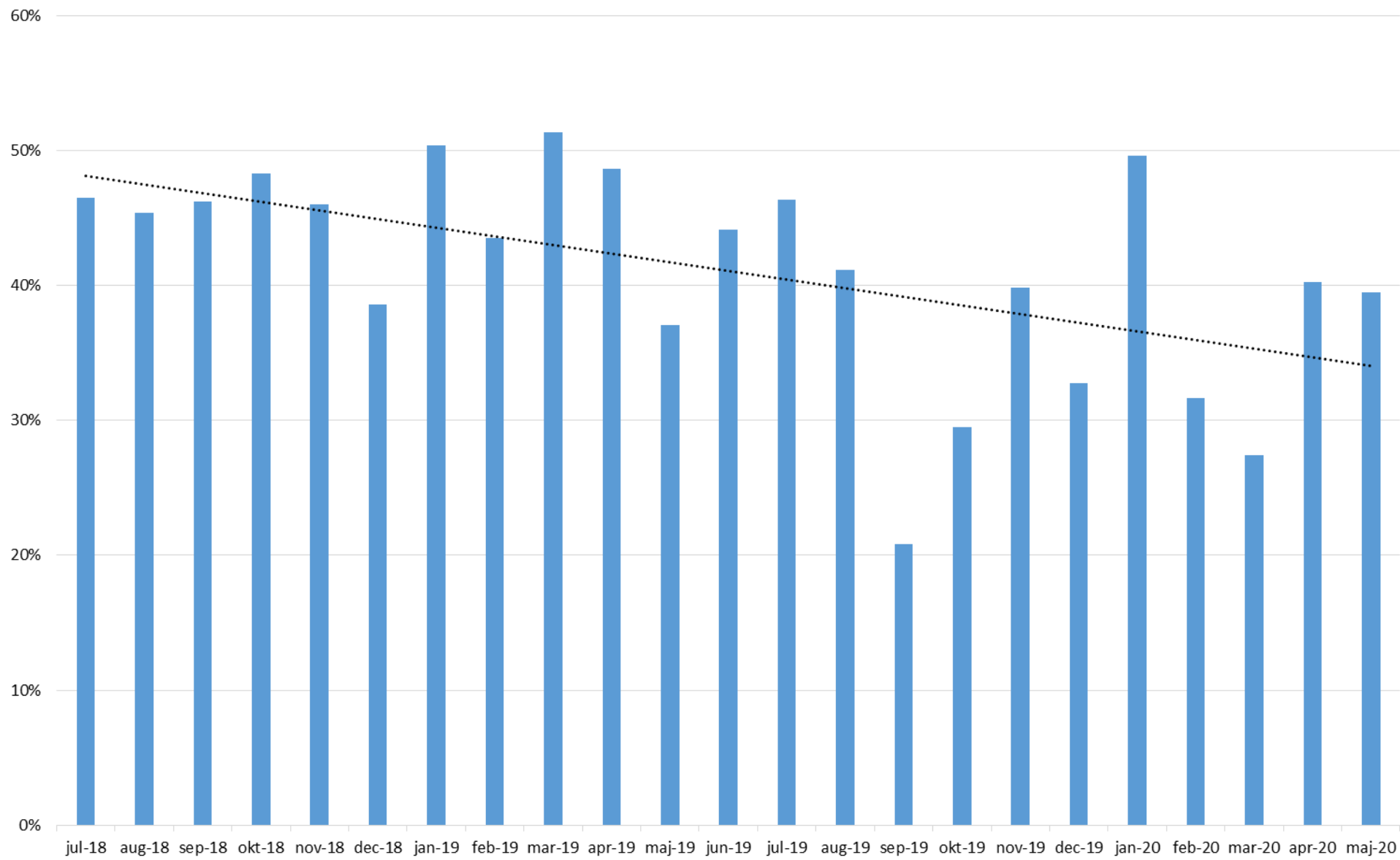
Specialmedicin



Vuxenpsykiatri



Medicin Bollnäs



Operation Bollnäs

