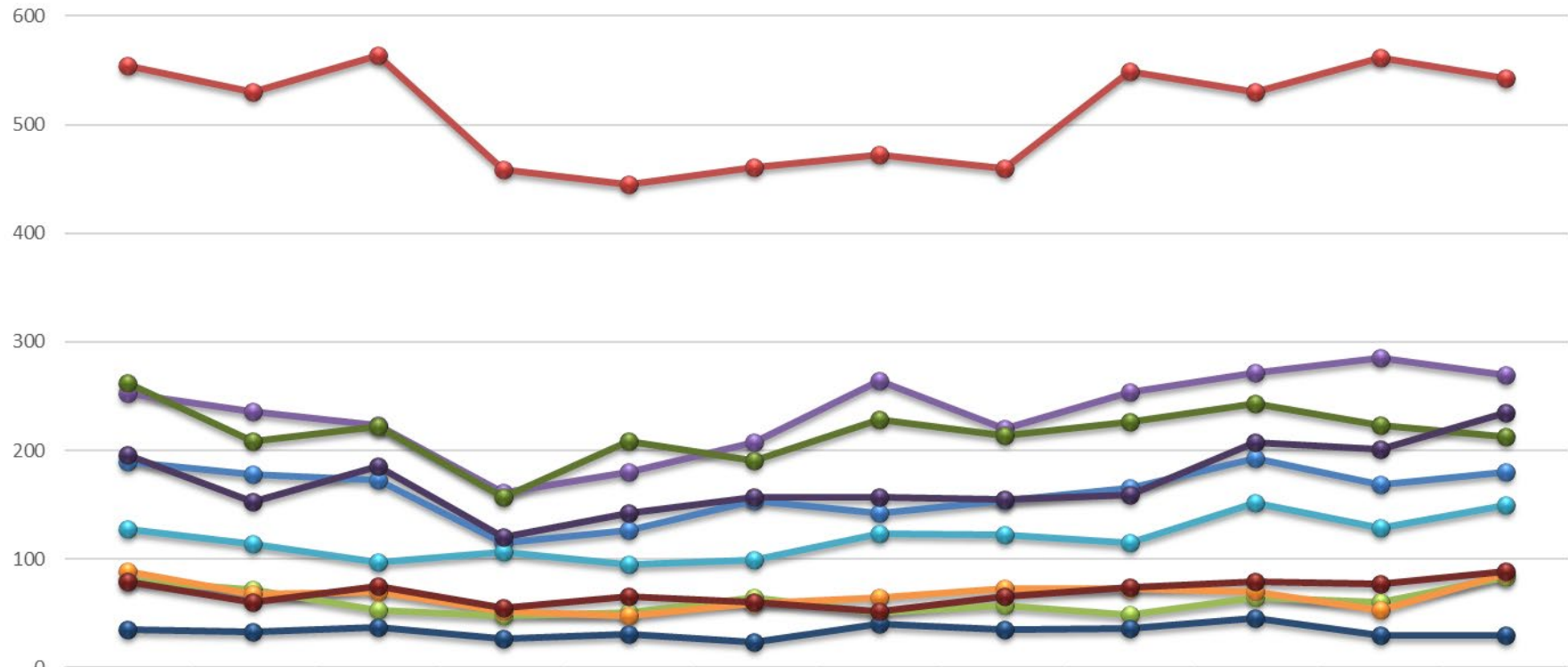
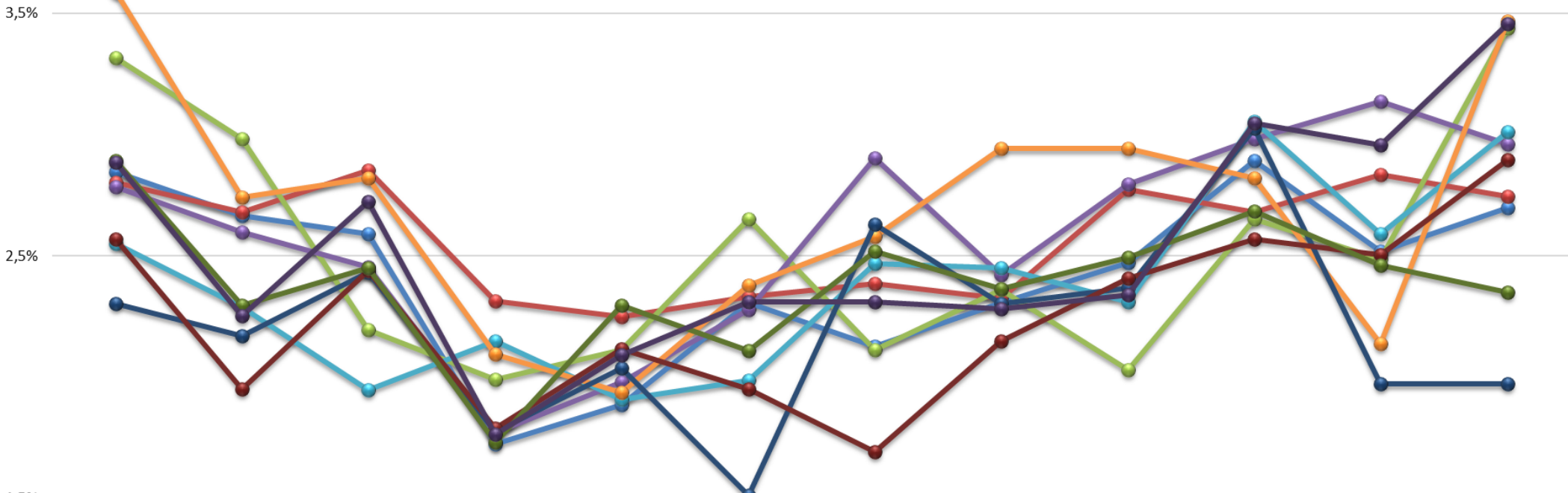


Antal inskrivna = vårdkontakter 65+ per kommun

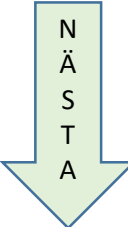


	2020-01	2020-02	2020-03	2020-04	2020-05	2020-06	2020-07	2020-08	2020-09	2020-10	2020-11	2020-12
Bollnäs	190	178	173	115	126	154	142	154	165	193	168	180
Gävle	554	530	564	458	445	461	472	460	549	530	561	543
Hofors	80	72	53	48	51	64	51	57	49	64	60	83
Hudiksvall	253	236	223	161	180	207	264	220	254	271	285	269
Ljusdal	127	114	97	107	95	99	123	122	115	152	129	150
Nordanstig	89	68	70	52	48	59	64	73	73	70	53	86
Ockelbo	35	33	37	27	31	23	40	35	36	46	30	30
Ovanåker	79	60	75	55	65	60	52	66	74	79	77	89
Sandviken	262	208	222	157	208	191	228	214	226	243	223	213
Söderhamn	196	153	185	120	142	157	157	155	159	207	201	235

Andel inskrivna = vårdkontakter 65+ per kommun



	2020-01	2020-02	2020-03	2020-04	2020-05	2020-06	2020-07	2020-08	2020-09	2020-10	2020-11	2020-12
Bollnäs	3%	3%	3%	2%	2%	2%	2%	2%	2%	3%	3%	3%
Gävle	3%	3%	3%	2%	2%	2%	2%	2%	3%	3%	3%	3%
Hofors	3%	3%	2%	2%	2%	3%	2%	2%	2%	3%	2%	3%
Hudiksvall	3%	3%	2%	2%	2%	2%	3%	2%	3%	3%	3%	3%
Ljusdal	3%	2%	2%	2%	2%	2%	2%	2%	2%	3%	3%	3%
Nordanstig	4%	3%	3%	2%	2%	2%	3%	3%	3%	3%	2%	3%
Ockelbo	2%	2%	2%	2%	2%	2%	3%	2%	2%	3%	2%	2%
Ovanåker	3%	2%	2%	2%	2%	2%	2%	2%	2%	3%	3%	3%
Sandviken	3%	2%	2%	2%	2%	2%	3%	2%	2%	3%	2%	2%
Söderhamn	3%	2%	3%	2%	2%	2%	2%	2%	2%	3%	3%	3%



Andelen inskrivna som är över 65 år per kommun jan-dec

